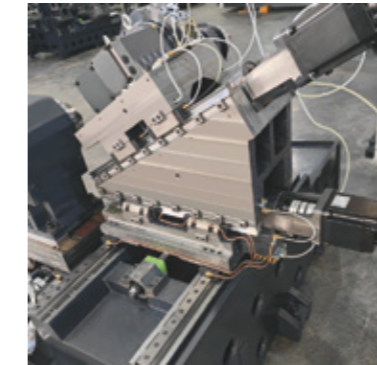


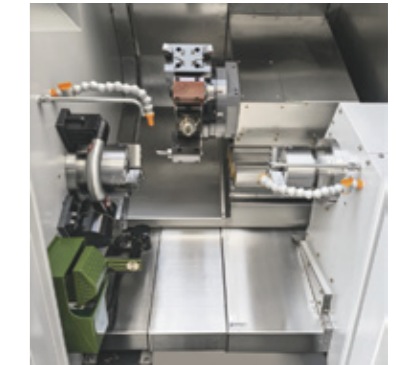
Frame



Interpolation Y axes



CS axes with hydraulic brake



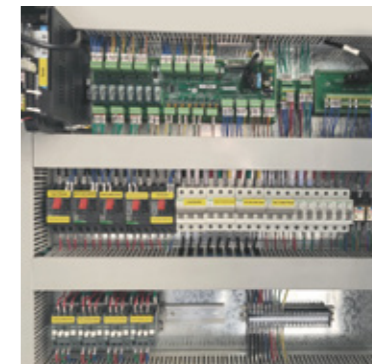
Dual spindles



Tool setting probe and parts catcher



Sub-spindle



SCHNEIDER brand electricity parts



SYNTEC 22TB CNC controller

### Features:

- Adopt TAIWAN technology, designed by TAIWAN engineer, most parts adopt GERMANY/JAPAN/TAIWAN brand
- Similar structure as JAPANESE machine, bed adopt flat bed, slide board adopt 45° slant design, good machining flexibility
- Main spindle and sub-spindle adopt high precision electro-spindle unit, big output torque, rapid start-stop speed
- Can realize main spindle side and sub-spindle sides' meantime machining
- Adopt BMT45 powered tool turret with interpolation Y axes
- Adopt modularization design, has strong extended function, easy for various especial configuration choice
- Adopt HT300 resin sand cast iron, after aging treatment and FEA analysis, small distortion, good torsional strength, good heat stability
- Base adopt multilayer strengthening rib, ensure bed's strength and stability
- Adopt high precision pre-stretched ball screw, coupled with motor directly by linkager, high transmission rigidity, can realize high precise turning
- Adopt high precision ROLLER type linear guideway, high rigidity, good accuracy holding, suitable for heavy loading and precise machining

### Main parts list:

Item	Brand	Item	Brand
CNC controller	JAPAN-FANUC/TAIWAN-SYNTEC	Linear guideway	TAIWAN-PMI P class
Servo driver&motor	JAPAN-FANUC/TAIWAN-SYNTEC	Hydraulic collet/chuck	TAIWAN-AUTOGRIP
Spindle bearing	JAPAN-NSK/GERMANY-SKF	Hydraulic parts	TAIWAN/JAPAN
Ball screw bearing	JAPAN-KOYO/GERMANY-FAG	Coolant pump	Joint-venture
Tool turret	GERMANY-SAUTER(GPM)/TAIWAN-TCSM	Electricity parts	FRANCE-SCHNEIDER
Ball screw	TAIWAN-PMI C3 class	Nuts	TAIWAN-YINSH

### Standard configuration:

- FANUC 0I TF CNC controller
- Dual spindles
- Powered tool turret with Y axes
- Hydraulic chuck

### Optional configuration:

- SYNTEC 22TB CNC controller
- Tool setting probe
- Parts catcher

Specification:			
Item	Specification	Unit	BL-H40SY
Capacity	Max. swing dia. over bed	mm	Φ500
	Max. swing dia. over slide	mm	Φ250
	Max. turning dia	mm	Φ250
	Max. turning length	mm	420
Main spindle & Sub-spindle	Spindle bore	mm	Φ56
	Spindle end type	/	A2-5
	Spindle speed	rpm	5000
	Spindle max. bar through dia.	mm	Φ42/Φ44*
	Clamping device	/	CL-42 collet chuck/6" chuck*
	Spindle motor	kw	11(electro-spindle)
X/Y/Z1/Z2 axes	Linear guideway type	/	ROLLER type
	X/Y/Z1/Z2 axes linear guideway width	mm	30/35/35/35
	X/Y/Z1/Z2 axes travel	mm	200/±50/450/420
	X/Y/Z1/Z2 axes motor	kw	1.8(FANUC)
	X/Y/Z1/Z2 axes rapid moving speed	m/min	24/15/24/20
Tool turret	Tool turret type	/	BMT45 Servo powered tool turret
	Tool qty	/	12T
	Toolshank size	mm	25×25, Φ32
	Live tool motor power	kw	2.7(FANUC)
	Live tool max. speed	rpm	4000
Others	Ex-circle finish turning accuracy	/	IT6
	Finish turning roughness	mm	Ra0.2~1.6
	Finish turning roundness	mm	≤0.003
	Positioning accuracy(X/Y/Z1/Z2)	mm	0.007/0.008/0.008/0.008
	Repeat positioning accuracy(X/Y/Z1/Z2)	mm	0.003/0.004/0.004/0.004
	Coolant pump motor	w	500
	N.W.	kg	4500

\*As option