



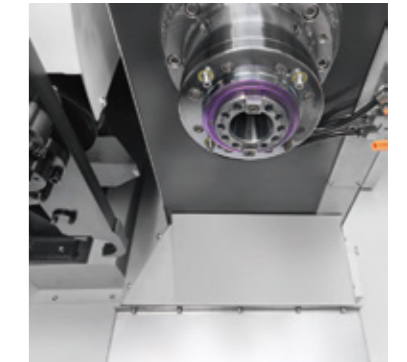
V8 frame



V11 3 axes 45mm ROLLER type linear guideway



V8 V11 Z axes 6 slide blocks



V8 V11 BT40-150 spindle



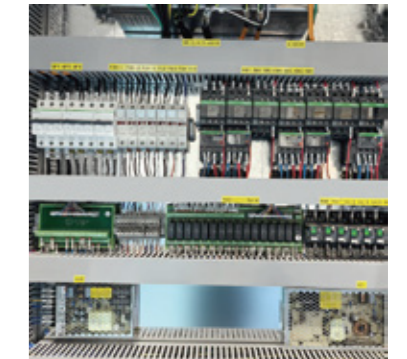
24T ARM type tool magazine



GSA brand 4th axes



TANSHING brand 5th axes



SCHNEIDER brand electricity parts

Features:

- 3 axes ROLLER type linear guideway, suitable for heavy-duty cutting
- Whole production process accord to TAIWAN standard
- Most parts adopt GERMAN/JAPAN/TAIWAN brand
- High speed, high precision, long using lifespan
- Adopt HT300 high class cast iron, after aging treatment and FEA analysis
- Bridge shape column, high rigidity, high stability
- Use 24T Arm type ATC, adopt CAM driving, fast and stable tool changing, tool selection for bi-way as random.
- 3 axes use C3 class precision ball screw, match up nut preloading and ball screw pre-stretching, pre-eliminate backlash and temperature rising, ensure stable positioning and repeatable positioning precision

Main parts list:

Item	Brand	Item	Brand
Spindle bearing	JAPAN-NSK/GERMANY-FAG	Tool magazine	TAIWAN-OKADA
Ball screw bearing	JAPAN-NACHI/NSK/NTN	Booster cylinder	TAIWAN
Linear guideway	TAIWAN-HIWIN/PMI	Pneumatic parts	TAIWAN-AIRTAC
Ball screw	TAIWAN-HIWIN/PMI	Lubrication pump	TAIWAN-ISHAN/BEISUN
Spindle	TAIWAN-KENTURN/VOLIS/SPINTRUE	Electric parts	FRANCE-SCHNEIDER

Standard configuration:

- FANUC 0i MF CNC Controller
- 24T Arm type tool magazine

Optional configuration:

- SIEMENS 828D CNC controller
- Tool setting probe
- 4th axes
- 5th axes

TAIWANESE QUALITY, LINEAR GUIDEWAY, 24T TOOL MAGAZINE

Specification:					
Item	Specification	Unit	BL-V8 ^{HOT}	BL-V11 ^{HOT}	BL-V12
Worktable	Table size	mm	1000×550	1200×600	1300×700
	T slot(qty/width/gap)	mm	5/18/90	5/18/100	5/18/130
	Table max. loading	kg	700	900	1200
Travel	X/Y/Z axes travel	mm	800/550/550	1100/600/600	1200/700/700
Spindle	Spindle type	/	BT40-150	BT40-150	BT40-150 BT50-155(190*)
	Distance from spindle nose to table surface	mm	120~670	120~720	200~900 160~860
	Distance from spindle center to column face	mm	620	670	780
	Spindle taper	/	7:24		
	Spindle motor	kw	7.5/11;11/15*(FANUC)	11/15(FANUC)	11/15(FANUC)
	Spindle speed	rpm	Belt-drive: 8000/10000; Direct-drive: 12000*		Belt-drive: BT40-150: 8000/10000; BT50-155: 8000; BT50-190:6000
Feeding axes	X/Y/Z axes guideway type	/	3 axes ROLLER type LINEAR guideway(XY axes LINEAR guideway, Z axes BOX guideway*)		
	X/Y/Z axes linear guideway width	mm	35/45/45(Z axes 6 blocks)	45/45/45(XZ axes 6 blocks)	45/45/45(Y axes 2 guideway)
	X/Y/Z axes max. rapid moving speed	m/min	48/48/36	36/36/32	24/24/24
	Cutting feed speed	m/min	10		
	X,Y,Z axes ball screw dia./pitch	mm	40/16	40/12	40/10
	X/Y/Z axes positioning accuracy	mm	±0.004	±0.004	±0.005(300)
	X/Y/Z axes repeatable positioning accuracy	mm	±0.003	±0.003	±0.004(300)
Tool magazine	Tool magazine type	/	24T Arm type		
	Max. tool weight	kg	BT40:8; BT50:18		
	Max. tool length	mm	BT40:300; BT50:400		
	Max. tool dia.(fully loaded)	mm	BT40:80; BT50:112		
	Max. tool dia.(no adjacent)	mm	BT40:150; BT50:200		
	Tool changing time	s	BT40:1.8 ; BT50: 2.5		
Others	Overall Size	mm	2600×2190×2500	3040×2400×2600	3680×2780×3100
	Weight	kg	5600	7000	9600

* As option

Specification:								
Item	Specification	Unit	BL-V13		BL-V16		BL-V18	
Worktable	Table size	mm	1500×700		1700×800		2000×900	
	T slot(qty/width/gap)	mm	5/18/150		5/18/125		5/22/160	
	Table max. loading	kg	1300		1500		1600	
Travel	X/Y/Z axes travel	mm	1300/700/700		1600/800/700		1800/950/700	
Spindle	Spindle type	/	BT40-150	BT50-155(190*)	BT40-150	BT50-155(190*)	BT50-190(155*)	
	Distance from spindle nose to table surface	mm	100~800	60~760	180~880	140~840	110~810	
	Distance from spindle center to column face	mm	780		930		1040	
	Spindle taper	/	7:24					
	Spindle motor	kw	15/18.5(FANUC βiIP30)		15/18.5(FANUC βiIP30)		15/18.5(FANUC βiIP30)	
	Spindle speed	rpm	Belt-drive: BT40-150: 8000/10000; BT50-155: 8000; BT50-190:6000					
Feeding axes	X/Y/Z axes guideway type	/	3 axes ROLLER type LINEAR guideway(XY axes LINEAR guideway, Z axes BOX guideway*)					
	X/Y/Z axes linear guideway width	mm	45/45/45(Y axes 4 guideway)		45/45/45(Y axes 4 guideway)		55/45/45(Y axes 4 guideway)	
	X/Y/Z axes max. rapid moving speed	m/min	24/24/24		20/20/20		20/20/20	
	Cutting feed speed	m/min	10					
	X,Y,Z axes ball screw dia./pitch	mm	50/10		50/10		50/10	
	X/Y/Z axes positioning accuracy	mm	±0.005(300)		±0.005(300)		±0.005(300)	
	X/Y/Z axes repeatable positioning accuracy	mm	±0.004(300)		±0.004(300)		±0.004(300)	
Tool magazine	Tool magazine type	/	24T Arm type					
	Max. tool weight	kg	BT40:8; BT50:18					
	Max. tool length	mm	BT40:300; BT50:400					
	Max. tool dia.(fully loaded)	mm	BT40:80; BT50:112					
	Max. tool dia.(no adjacent)	mm	BT40:150; BT50:200					
	Tool changing time	s	BT40:1.8 ; BT50: 2.5					
Others	Overall Size	mm	3940×2810×3020		3940×3080×3020		4440×3250×3100	
	Weight	kg	11600		13100		14600	

*As option