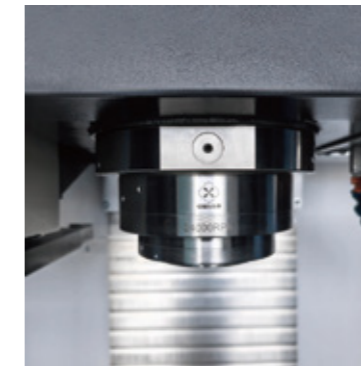


TAIWANESE QUALITY, LINEAR GUIDEWAY, 12T/16T/20T TOOL MAGAZINE



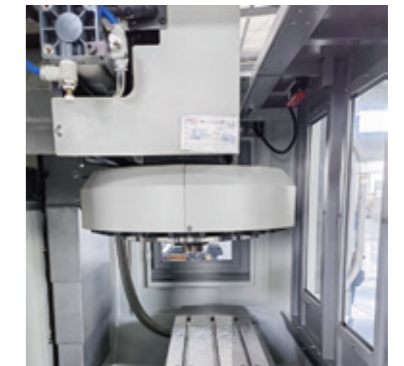
Frame with THK ball screw and linear guideway



Spindle HSK-E40 24000 30000rpm(opt.)



V4 table and inside



V4 12T Umbrella type tool magazine



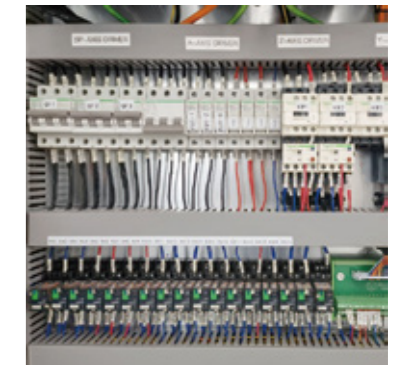
V7 20T ARM type tool magazine



Back-setted chip conveyor



GERMAN EUCHNER safety lock(opt.)



SCHNEIDER brand electricity parts

Features:

- 3 axes adopt THK brand high precision linear guideway
- Designed by GERMAN engineer
- Whole production process accord to TAIWANESE standard
- Chips outlet set at the back of machine
- Most parts adopt GERMAN/JAPANESE/TAIWANESE brand
- High speed, high precision, long using lifespan
- Adopt HT300 high class cast iron, after aging treatment and FEA analysis
- Bridge shape column, high rigidity, high stability
- 3 axes use THK brand C3 class precision ball screw, ensure stable positioning and repeatable positioning precision
- Suitable for small & medium-sized cutting

Main parts list:

| Item | Brand | Item | Brand |
|--------------------|----------------------------------|------------------|------------------------|
| Spindle bearing | JAPAN-NSK/GERMANY-FAG/TAIWAN-TPI | Booster cylinder | TAIWAN-HAO CHENG/VOLIS |
| Ball screw bearing | JAPAN-NSK/NACHI | Lubrication pump | TAIWAN-BEISUN |
| Ball screw | JAPAN-THK | Power switch | TAIWAN-MEANWELL |
| Linear guideway | JAPAN-THK | Pneumatic parts | TAIWAN-AIRTAC |
| Spindle unit | TAIWAN-VYU CHEN/CELLS/SPINTRUE | Electric parts | FRANCE-SCHNEIDER |
| Tool magazine | TAIWAN-OKADA | | |

Standard configuration:

- SIEMENS 808D CNC controller
- V4:12T Umbrella type tool magazine
- V7:20T ARM type tool magazine

Optional configuration:

- SIEMENS 828D/FANUC/GSK/SYNTEC CNC controller
- V4:16T Arm type tool magazine
- V7:12T Umbrella type tool magazine
- 4th axes
- 5th axes
- Tool setting probe
- CTS(coolant through spindle)

| Specification: | | | | | |
|----------------|--|-------|---|---------------|--|
| Item | Specification | Unit | BL-V4 | | BL-V7 |
| Worktable | Table size | mm | 800×320 | | 900×400 |
| | Table max. loading weight | kg | 200 | | 300 |
| | T slot(NO,width/gap) | mm | 3/14/100 | | |
| Travel | X/Y/Z axes | mm | 450/300/450 | | 720/450/500 |
| Spindle | Distance from spindle nose to table surface | mm | 120~570 | | 100~600 |
| | Distance from spindle center to column surface | mm | 375 | | 440 |
| | Spindle type | mm | BT40-120 7:24(BT30/BBT40/SK40/HSK-E40)* | | |
| | Spindle motor | kw | 5.5(SIEMENS,GSK); 5.5/7.5(SYNTEC); 3.7/5.5(FANUC α) | | 5.5(SIEMENS 808D); 7.5(SIEMENS 828D,GSK,SYNTEC); 7.5/11(FANUC) |
| | Spindle speed | rpm | Belt-drive: 8000/10000; (Direct-drive: 12000/15000/24000/30000)* | | |
| Feeding axes | X,Y,Z axes ball screw O.D./pitch | mm | 32/16 | | |
| | X/Y/Z axes linear guideway width | mm | 30 | | |
| | Cutting feed speed | m/min | 10 | | |
| | X/Y/Z axes rapid moving speed | m/min | 36/36/30 | | |
| | Positioning precision | mm | ±0.005 | | |
| | Repeatable positioning precision | mm | ±0.003 | | |
| Tool magazine | Tool magazine | / | Umbrella type 12T | Arm type 16T* | Arm type 20T |
| | Max. tool weight | kg | 8 | | |
| | Max. tool length | mm | 250 | 250 | 300 |
| | Max. tool dia.(fully loaded) | mm | Φ90 | Φ80 | Φ80 |
| | Max. tool dia.(no adjacent) | mm | Φ150 | | |
| | Tool changing time | s | 7 | 1.8 | 1.8 |
| Others | Overall dimension(L×W×H) | mm | 1800×1800×2120 | | 2100×2000×2160 |
| | Weight | kg | 2400 | | 3200 |

*As option