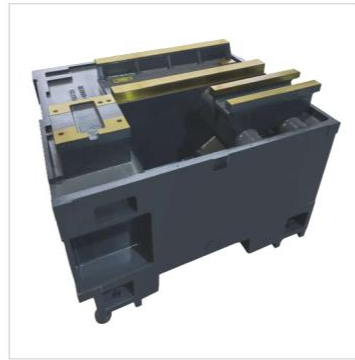


**Features:**

- S200/200L/200LM adopt high precision ROLLER type linear guideway.
- S200H/200LH adopt BOX guideway, super high rigidity and machining accuracy.
- Adopt similar structure as JAPAN TAKISAWA, bed adopt flat bed, slide board adopt 30°slant design, high rigidity, good machining flexibility.
- Super compact structure, big inside space, modern appearance.
- Adopt JAPAN technology, designed by JAPAN engineer, most parts adopt GERMANY/JAPAN/TAIWAN brand.
- Adopt modularization design, has strong extended function, easy for various especial configuration choice, such as tool setter, parts catcher, robot etc.
- Adopt HT300 resin sand cast iron, after aging treatment and FEA analysis, small distortion, good torsional strength, good heat stability.
- Base adopt multilayer strengthening rib, ensure bed's strength and stability.
- Frame adopt oil-coolant separation design, adopt independent coolant tank.
- Adopt high precision integral spindle unit, spindle motor adopt high performance servo motor, big output torque, high speed, wide adjustment rang.
- Adopt high precision pre-stretched ball screw(double nuts),coupled with feeding motor directly by linkager, high transmission rigidity, can realize μ class precise turning.
- Can mount right-setting or back-setting chip conveyor, strong chip conveying capacity.
- Represent the top class of Chinese CNC turning machine.
- S200/200L/200H/200LH: 8T/12T Hydraulic-servo tool turret.
- S200LM: 12T VDI30/BMT45 Servo powered tool turret and CS axes.



S200 200L 200LM LINEAR guideway



S200H 200LH BOX guideway



Spindle



S200 200L own-made 12T hydraulic-servo turret



S200LM BMT45 12T powered tool turret



S200LM VDI30 12T powered tool turret



Tool setting probe(opt.)



Parts catcher with conveyer belt

Main parts list:

Item	Brand	Item	Brand
CNC controller	GERMANY-SIEMENS/JAPAN-FANUC/TAIWAN- SYNTEC	Tri-color indication lamp	CHINA-SUNNYSH
Servo driver&motor	GERMANY-SIEMENS/JAPAN-FANUC/TAIWAN-SYNTEC	Breaker&AC contactor	FRANCE-SCHNEIDER
Spindle bearing	SWEDEN-SKF/JAPAN-NSK	Relay	JAPAN-OMRON
Hydraulic-servo tool turret(S200/S200L/200H/200LH)	OWN-MADE(KEY PARTS FROM TAIWAN/JAPAN)	DC switch power supply	TAIWAN-MEANWELL
Powered tool turret(S200LM)	GERMANY-SAUTER/OWN-MADE	Terminal block	GERMANY-WEIDMULLER
Ball screw	TAIWAN-PMI/HIWIN	Synchronous belt	USA-GATES
Ball screw bearing	SWEDEN-SKF/JAPAN-NSK	Synchronous belt wheel	TAIWAN-PTP
Linear guideway	TAIWAN PMI/HIWIN	Nuts	TAIWAN-YINSH
Lubrication system	TAIWAN-ISHAN	Shaft coupling	GERMANY-R+W
Chuck	TAIWAN-AUTOGRIP/KOREA-SAMCHULLY	Scrapping plate&Extensible cover	TAIWAN-WANHE
Hydraulic parts	TAIWAN/JAPAN	Chip conveyor&chip bucket	TAIWAN-WANHE
MPG	USA-HEDSS	Coolant pipe	TAIWAN-WEIDING

Standard configuration:

- FANUC 0i TF CNC controller
- Hydraulic chuck
- S200/200L/200H/200LH: Hydraulic-servo tool turret
S200LM: 12T VDI30 servo powered tool turret
- Hydraulic tailstock

Optional configuration:

- SIEMENS/SYNTEC CNC controller
- Automatic chip conveyor
- Tool setting probe
- Parts catcher

Specification:

Item	Specification	Unit	BL-S200		BL-S200L		BL-S200LM	BL-S200H	BL-S200LH	
Capacity	Guideway type	/	LINEAR						BOX	
	Chuck size	/	6"	8"	8"	8"	8"			
	Max. swing dia. over bed	mm	Φ510						Φ505	
	Max. swing dia. over slide	mm	Φ260						Φ290	
	Max. turning length	mm	340	330	500	450	280	450		
	Max. turning dia.	mm	Φ380(8T tool turret);Φ350(12T tool turret)				Φ360		Φ360	
Spindle	Spindle bore	mm	Φ56	Φ66	Φ66	Φ66	Φ66			
	Spindle end type	/	A2-5	A2-6	A2-6	A2-6	A2-6			
	Spindle speed	rpm	5000	4000	4000	4000	4000			
	Max. bar through dia.	mm	44	51	51	51	51			
	Spindle motor power	kw	7.5/11(FANUC)	11/15(FANUC)	11/15(FANUC)	11/15(FANUC)	11/15(FANUC)			
	CS axes division accuracy	Deg	/				0.001°		/	
X/Z axes	X axes travel	mm	180+20(8T tool turret);175+35(12T tool turret)			180 + 20		160 + 10		
	Z axes travel	mm	360		540(8T);500(12T);		490	320	500	
	X/Z axes rapid moving speed	m/min	28						24	
	X/Z axes linear guideway width	mm	30/35(ROLLER type)						/	
	X,Z axes ball screw O.D./pitch	mm	32/10							
Tool turret	Tool turret type	/	HYDRAULIC-SERVO			SERVO POWERED		HYDRAULIC-SERVO		
	Tool qty	/	8/12*			12		8/12*		
	Vicinal tool changing time	s	0.28			0.18		0.28		
	Farthest tool changing time	s	0.4			0.28		0.4		
	Toolshank size	mm	25×25, Φ40			20×20,Φ32		25×25, Φ40		
	Live tool driven motor	kw	/			4.5(FANUC)		/		
	Live tool driven motor torque	N.m	/			18(FANUC)		/		
	Live tool max. speed	rpm	/			6000(FANUC)		/		
Live tool type	/	/			VDI30(BMT45)*		/			
Tailstock	Ttailstock quill taper	/	MT4#							
	Tailstock quill dia./travel	mm	Φ75/90							
Accuracy	Ex-circle finish turning accuracy	/	IT6							
	Finish turning roughness	mm	Ra0.4~1.6							
	Finish turning roundness	mm	≤0.003							
	Positioning accuracy(X/Z)	mm	0.008/0.008							
	Repeat positioning accuracy(X/Z)	mm	0.004/0.004							
Others	Coolant pump power	w	370							
	Coolant flow	m ³ /h	2.5~4.0							
	Overall size	mm	1830×1640×1690			2030×1640×1690		1830×1640×1690	2030×1640×1690	
	N.W.	kg	3000			3300	3400	3100	3700	

* As option